

MANMADE DOCTRINES

- Final chapters of Ezekiel describe the Millennial Jerusalem
- Rev. 1:1 “*Blessed are the readers....*”
- God’s blessing only ever comes from believing what is true and holy
- We should construct our understanding of Revelation from the bottom up, not the top down

Top Down
Approach

GIBBERISH





- More prophecy comes to light as we pass through various stages of centuries of history
- The re-birth of Israel has shed the greatest light on End Times prophecies
- Premillennial approach means to take Revelation in its most plain and literal sense
- Amillennial approach requires taking Revelation as purely symbolic, and teaching it as allegory

RE-CREATION

MILE MARKERS



➤ MILE MARKER 1

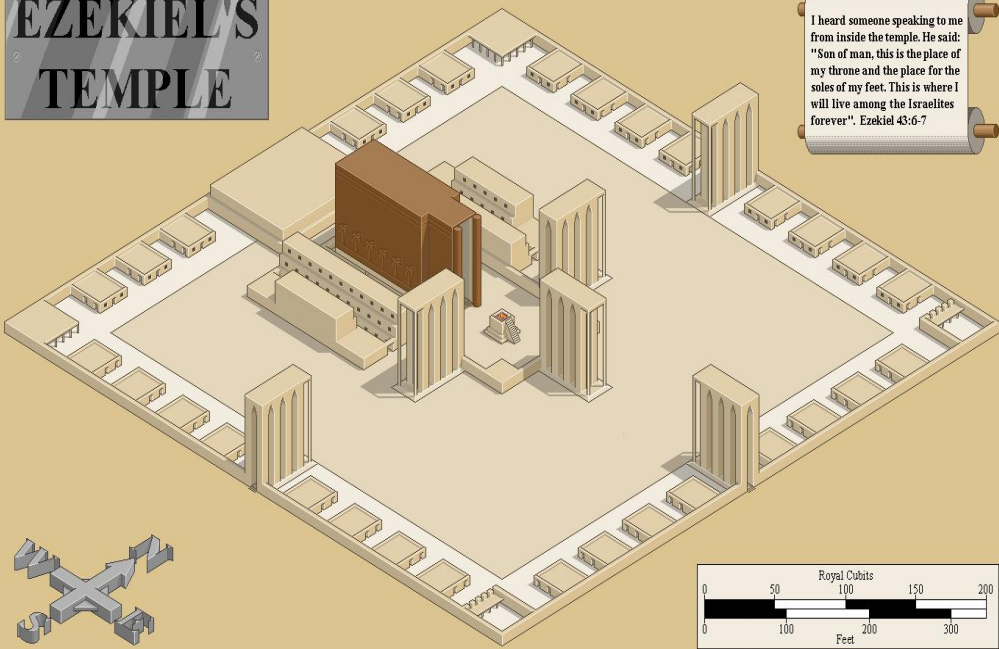
- Battle of Armageddon begins the Millennial Kingdom, exists on this present Earth (Rev.19)

➤ MILE MARKER 2

- A rebuilt Jerusalem is the city where Christ will rule
- City will have substantial geographical differences from the current Jerusalem
- Zech. 14:3 – 4
- Zech. 14:8
- Rebuilt Jerusalem is NOT New Jerusalem of Rev. 21
- Ezek. 40:1 - 4

EZEKIEL'S TEMPLE

I heard someone speaking to me from inside the temple. He said: "Son of man, this is the place of my throne and the place for the soles of my feet. This is where I will live among the Israelites forever". Ezekiel 43:6-7



➤ MILE MARKER 3

➤ Millennial Jerusalem will have a Temple with a Levite Priesthood

➤ Ezek. 41:1

➤ Ezek. 43:18 – 21

➤ MILE MARKER 4

➤ At the end of the 1000 years, Satan will lead a rebellion, and lose

➤ Next Satan will be thrown into The Lake of Fire forever (Rev. 20)





➤ MILE MARKER 5

➤ Christ hands rule of the earth that He has held for 1000 years back to The Father

➤ 1 Cor. 15:20 – 25

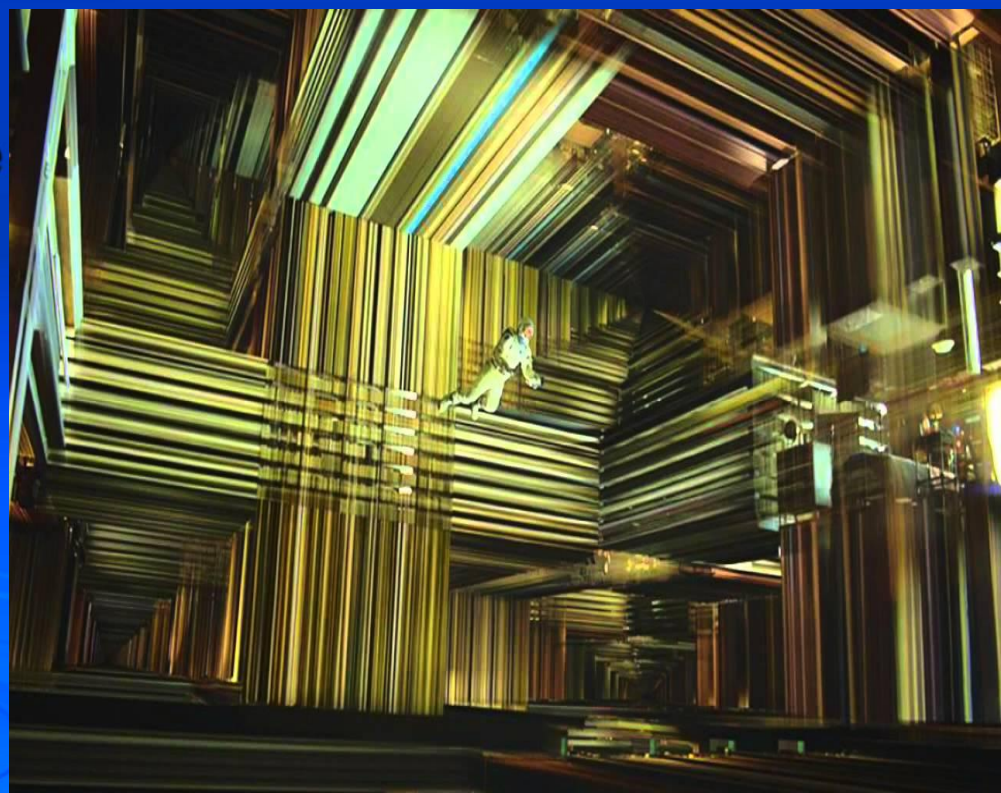
➤ MILE MARKER 6

➤ God disassembles the present earth and Universe, and re-creates new ones (Rev. 21:1)

➤ The New Jerusalem will have NO Temple (Rev. 21:22)

MAKING SENSE OF THE NEW UNIVERSE

- We have to set aside our notions of the current Universe
- The new earth and heavens aren't like the old
- Writers and film makers have no choice except to use “human standards” to communicate concepts
- John is seeing “in the spirit” things of the future, but can only use terms from his era and understanding



NEW JERUSALEM

- The description is as though Heaven and Earth have melded into one entity
- To measure means to ascertain the truth
- New Jerusalem is 1500 miles on each side !
- Dimensionally the city is a cube
- Holy of Holies was a cube of 20 cubits on each side



THE END OF BARRIERS

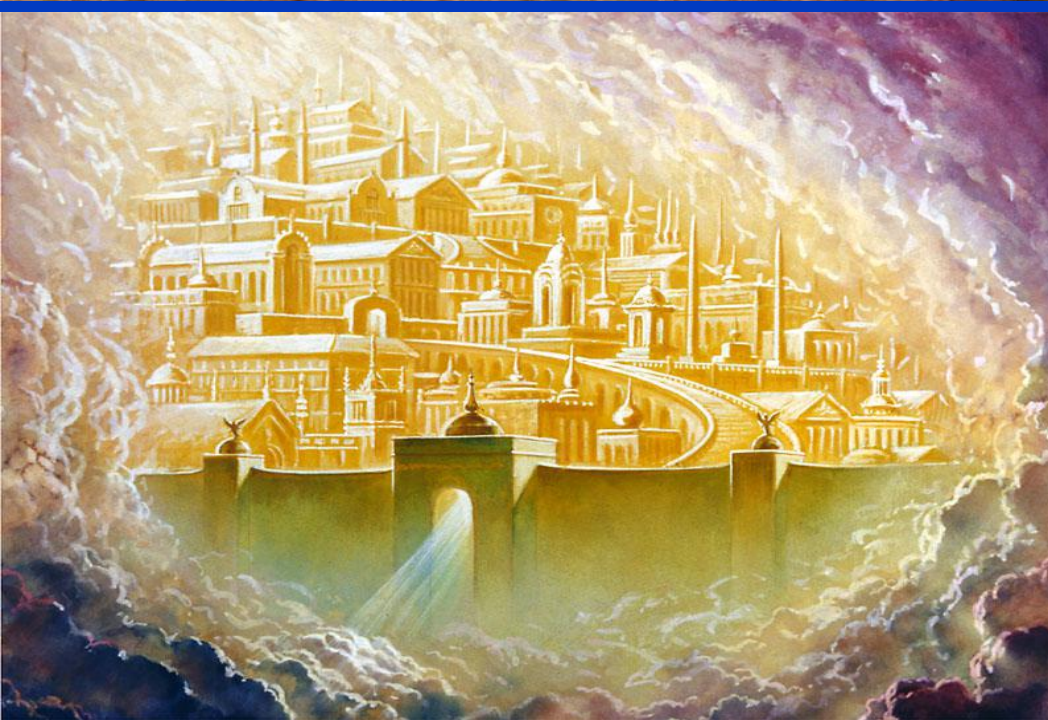


HOLY OF HOLIES

- Inner chamber acted as a barrier against human defilement
- Cubical shape of New Jerusalem means it has the same characteristics as the Holy of Holies
- Genesis 3:8 - 10



- City is 12,000 stadia on a side (= 1500 miles)
- Wall is 144 cubits high (= 216 feet)
- All measurements use a base number of 12
- The materials used to build the city are the richest
- The 12 foundation stones described as gemstones, each representing one of the 12 Disciples
- The gemstones also connect with the High Priest Breastplate



NO TEMPLE

- In ancient times a Temple was where a god was housed
- God as “Temple” is a figure of speech
- It means He needs no more protecting
- No sun or moon
- Could mean only the city, probably the entire Earth
- New Jerusalem is the center of the Universe

WHO LIVES IN NEW JERUSALEM?

- The Earth will be divided up into nations
- There will still be uniqueness to individuals
- Might it be that God will allow some select group to live in New Jerusalem?
- Christ says in Matt.5:19 that there will be a social hierarchy of lesser and greater





the GREAT DECEIVER

- Vs. 27 seems to have no relevance to the new earth
- Death and evil are gone so it can't exist on the new earth
- This is a warning to John's readers not to live their lives as detestable or deceiving if they want a part in the Eternal Era
- **Bdelugma** = exceptionally sinful or unclean
- **Pseudos** = deceit
- Deceit is Satan's overriding attribute